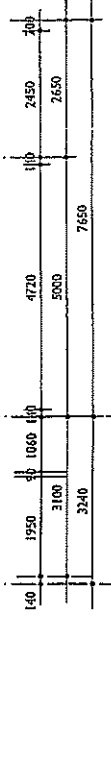
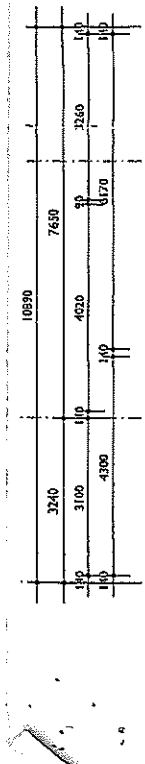
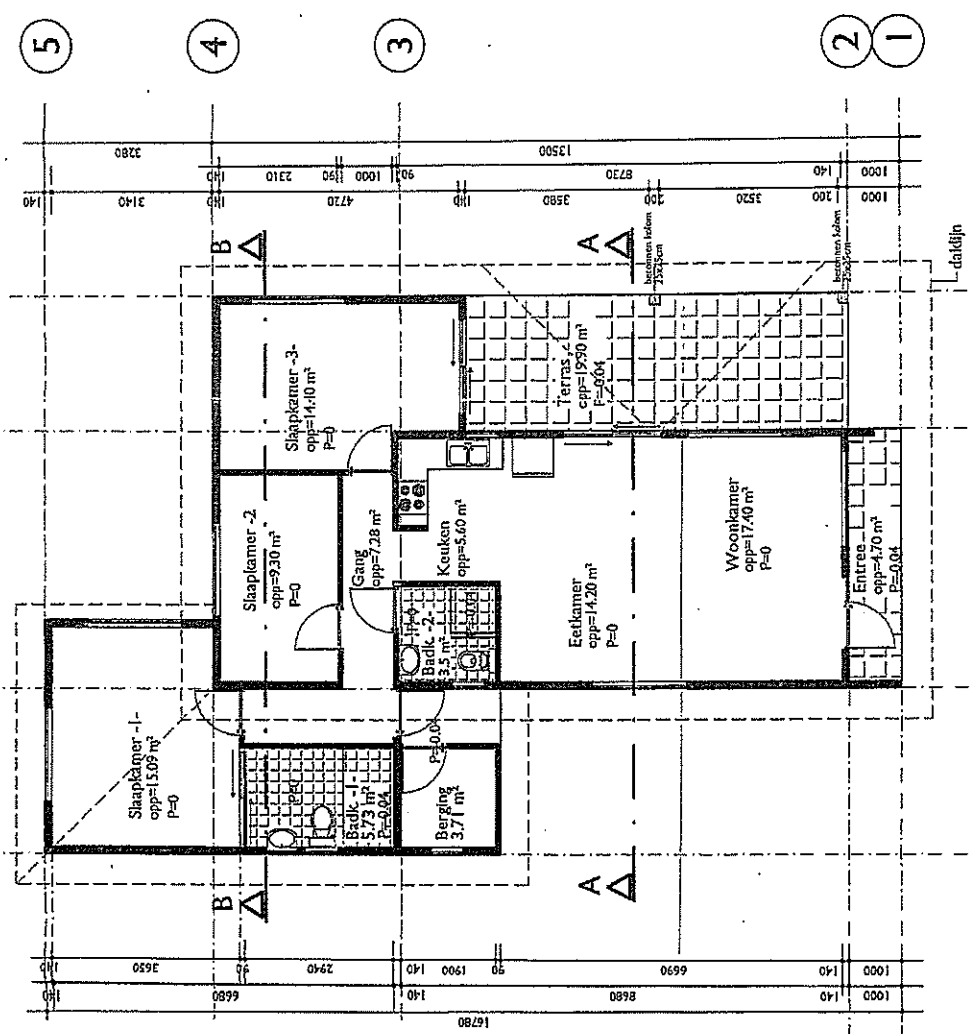


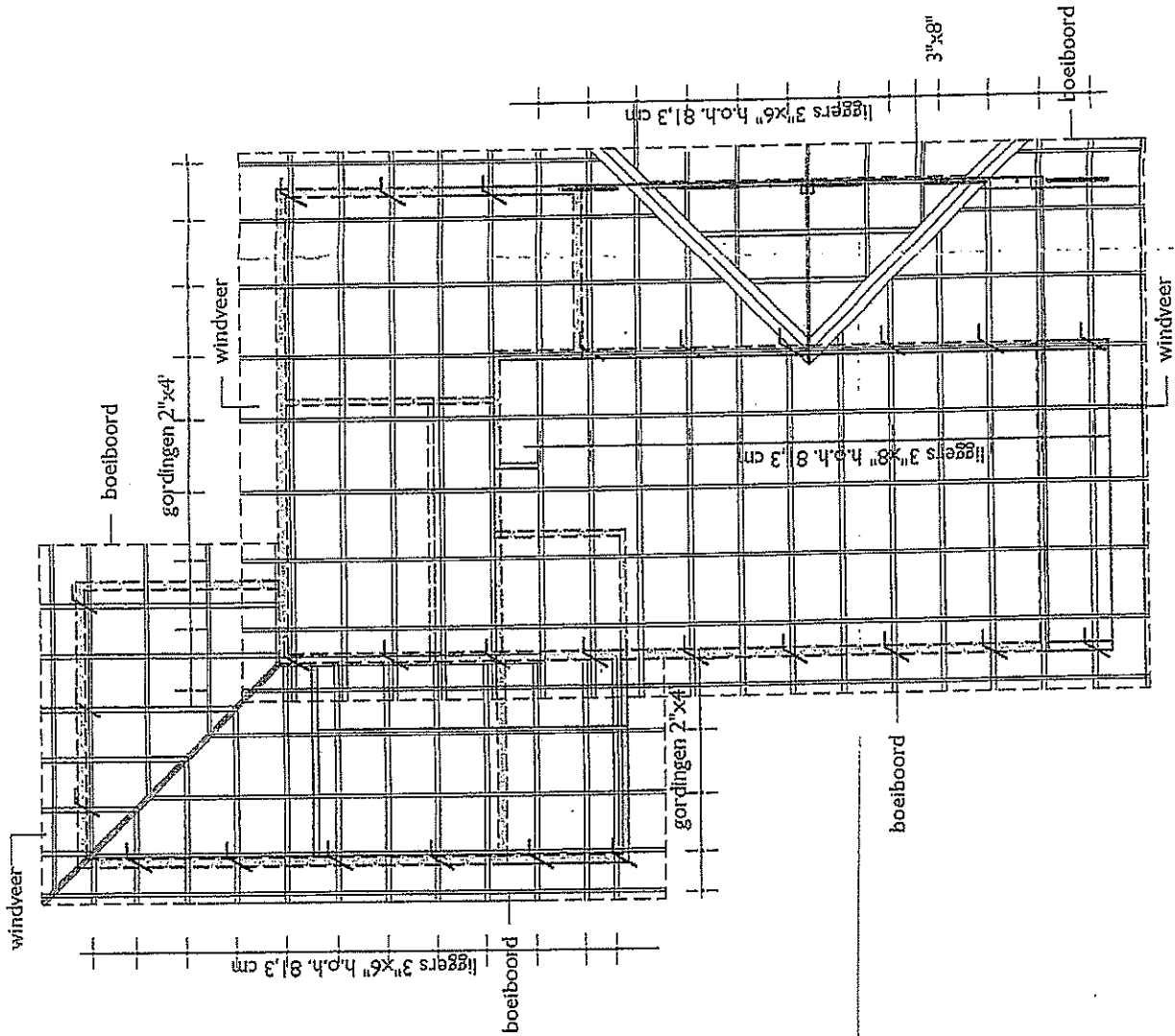
- RENNOOI:**
- A = aanrechtbak
 - B = handwasbak
 - C = closetpot
 - D = douche
 - E = wasmachine
 - O.S.= ontstoppingsst

FUNDERING & RIOLERING



PLATTEGROND



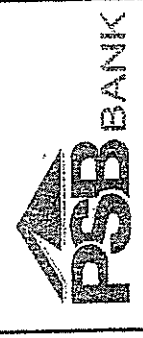


RENVOOI:

- dakbedekking : asbestvrije golfplaten
- gordingen : 2" x 4"
- dakbeschoot T-I-II platen
- dakvilt / asfaltpapier
- spanten/liggers : 3" x 6" / 3" x 8"
- kilkepers : 3" x 8"
- kilplanken : betonplex 18mm
- gootbekleding : zink
- windveer : 1 1/4" x 10"
- boeiiboord : 1 1/4" x 10"
- onderslagbalk : 3" x 8" : - - - - -
- dakhellingen : 12,5°
- dakankers : /
- ringbalk : = = = = =

AFGEGEVEN 0 7 NOV.

opp. 127,57 m²

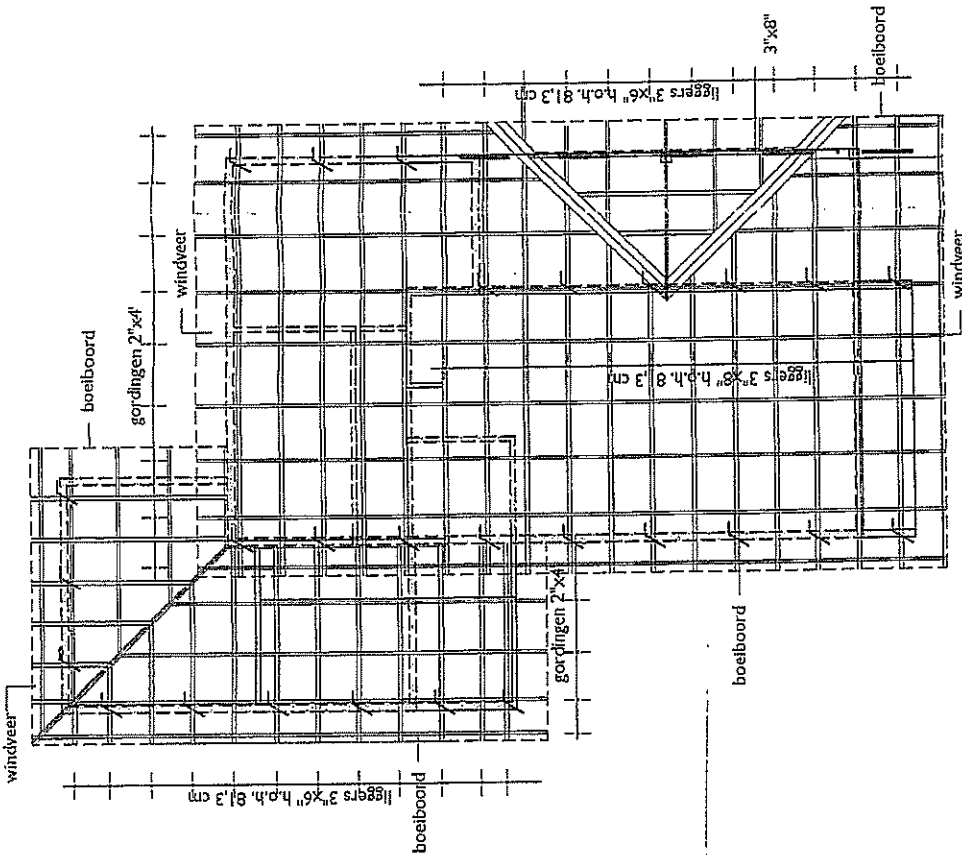


OPDRACHTGE

A	23-10-14	DJ		berging
Rev.	Datum	Get.	Contr.	

Projekt:

PPP 32 PSB woningen te Sapate Blok -J-



RENVOOI:

- dakbedekking : asbestvrije golfplaten
- gordingen : 2" x 4"
- dakbeschoot T-I-II platen
- dakvilt / asfaltpapier
- spanten/liggers : 3"x6"/3"x8"
- kilkepers : 3"x8"
- kiplanken : betonplex 18mm
- gootbekleding : zink
- windveer : 1/4" x 10"
- boelboord : 1/4" x 10"
- onderslagbalk : 3" x 8" : - - - - -
- dakhellingen : 12.5°
- dakankers : /
- ringbalk : =====

AFGEGEVEN OP 17 JUN 2014

opp: 127.57.....m²



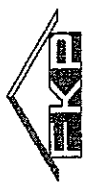
OPDRACHTGEVER

Rev.	Datum	Get.	Contr.	berghg
A	23-10-14	DJ		

Project: PPP 32 PSB woningen te Sapate Blok -f

Onderdeel: BESTEKTEKENING MODEL -C- (strokenfundering)

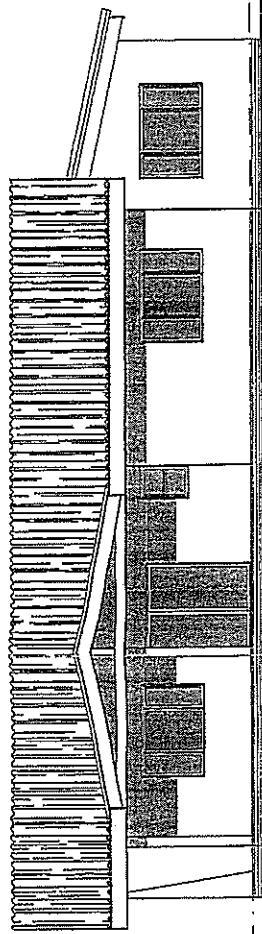
Project Nr:	Schaal:	Get: AGMD	Contr: GB	Tekn:
13-006	1:100			013
	Datum:	File:		
	05.03.2014			



FUNDASHON KAS POPULAR
SCHARLOO, P.O. BOX 762, CURAÇAO NA TEL: 376000

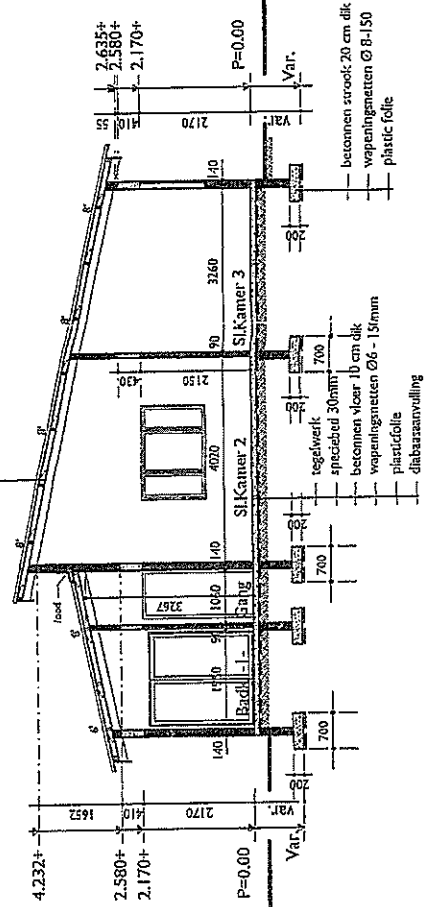
KAPPLAN





RECHTERGEVEL

- asbestvrije golfplaten
- gordingen 2" x 4"
- dakvlift/asfaltpapier
- dakbeschoot: TI-11 platen
- sporen/liggers 3"x6" h.o.h 81.33cm
- dakhelling 12,5°

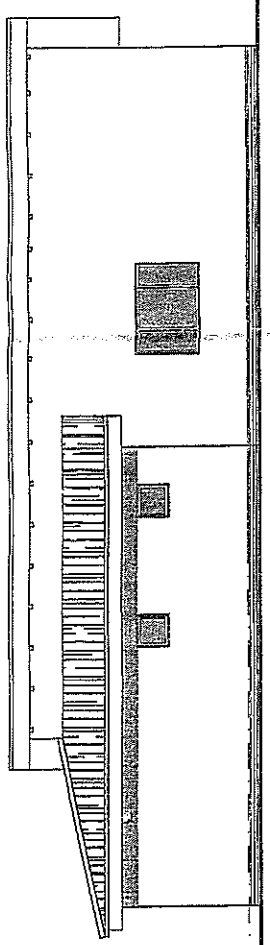


- betonnen strook 20 cm dik
- wapeningmatten Ø 8-150
- plastic folie

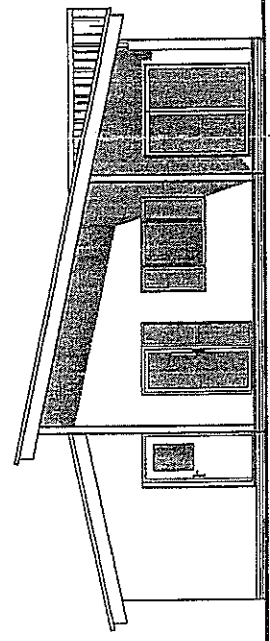
- tegelwerk
- speciedek 30mm
- betonnen vloer 10 cm dik
- wapeningmatten Ø6 - 150mm
- plasticfolie
- diataraanvulling

3.43
2.63
2.150

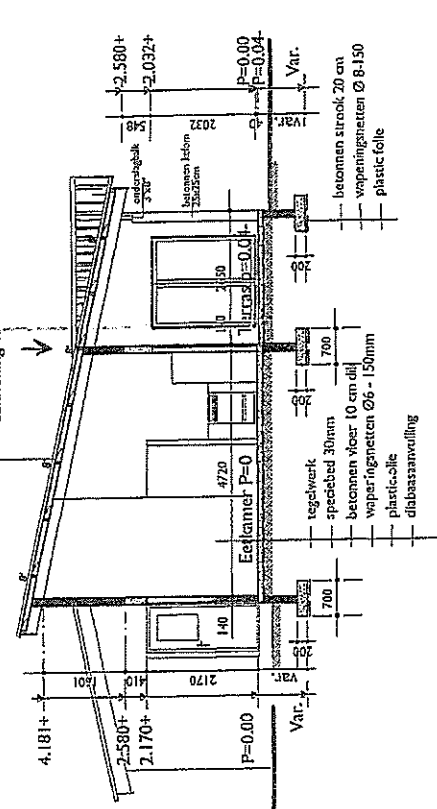
DRSN -B-B-



LINKERGEVEL



VOORGEVEL



ACHTERGEVEL

DRSN -A-A-



(A)

(B)

(C)

(D)

Opbouw